

N Ò R
F A X

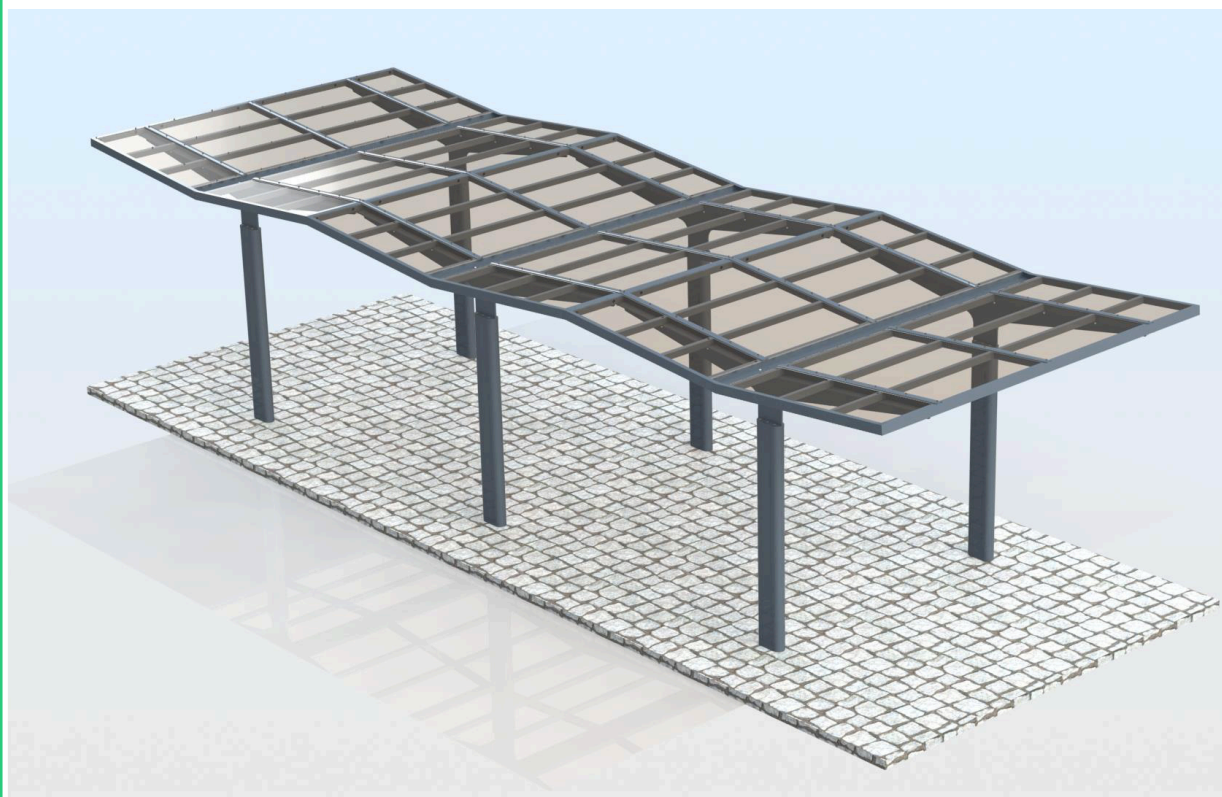
Tempus By-tak

Brukervennlig og bærekraftig
løsninger til nordiske uterom

post@norfax.no

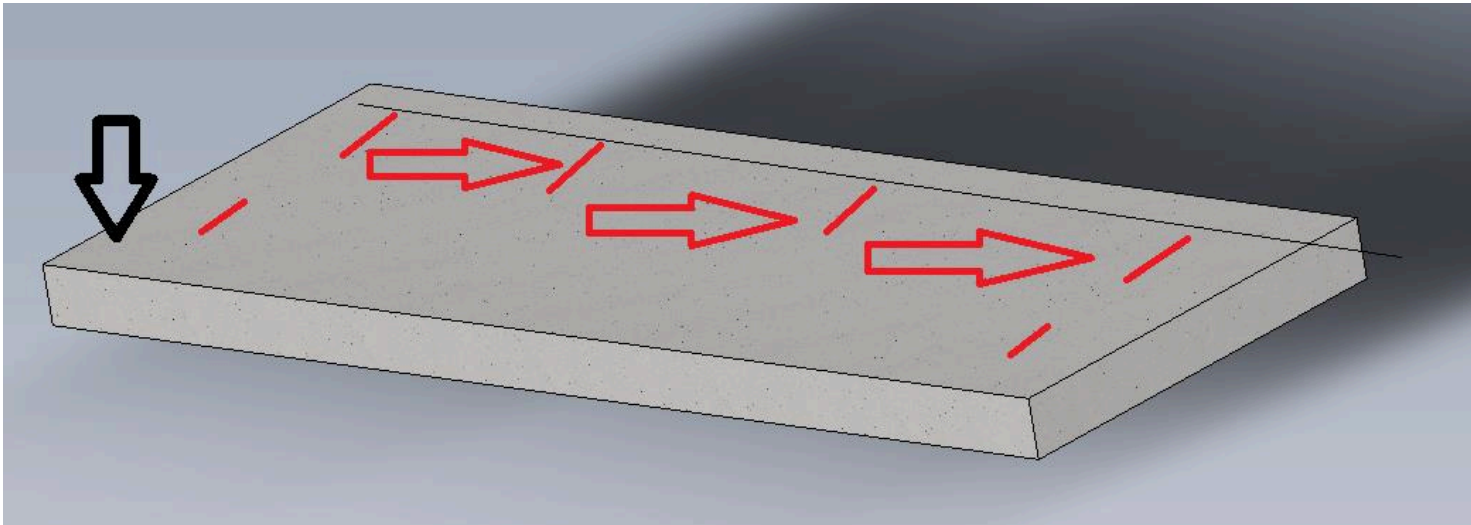
66 80 00 60

norfax.no

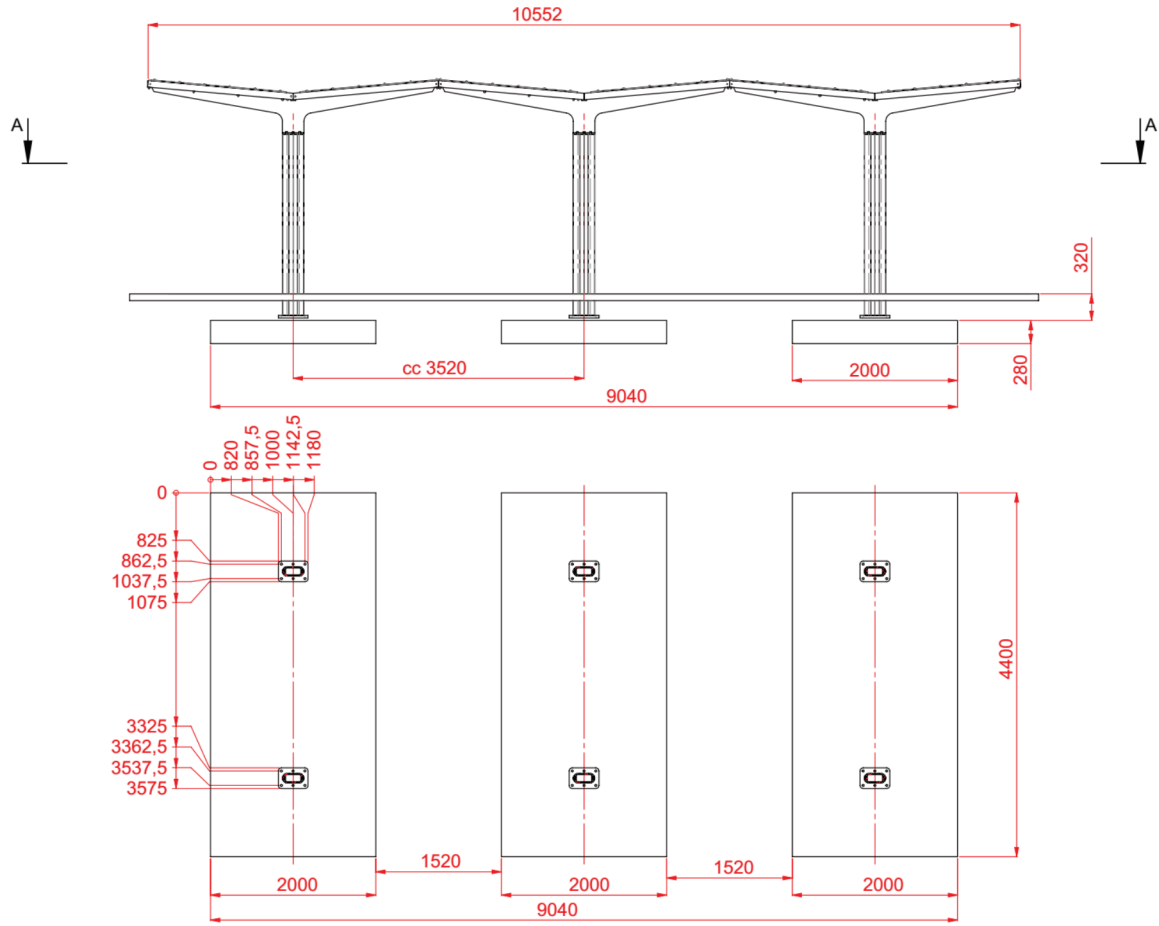


Steg 1

1. Det første trinnet er å etablere plassområdet for å plassere alle søyler og stolper;



Sørg for at all konstruksjon vil passe til fundamentet i henhold til tegningene.



Steg 2

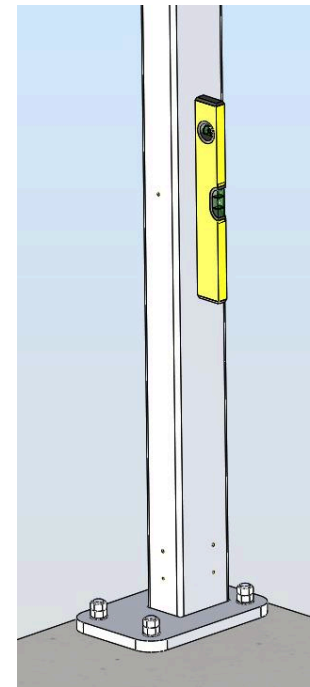
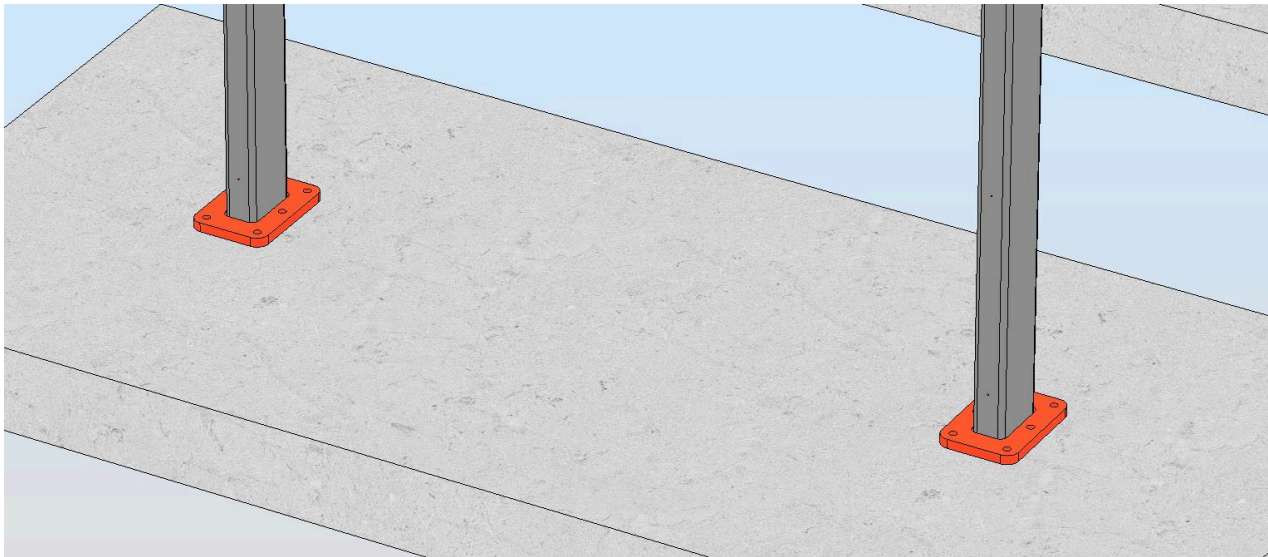
2. Bor hull og fest gjengestenger (bruk Hilti System eller annet lignende system);



For denne konstruksjonen skal det bores for M20 gjengestenger. Herding tilpasses for været på stedet.

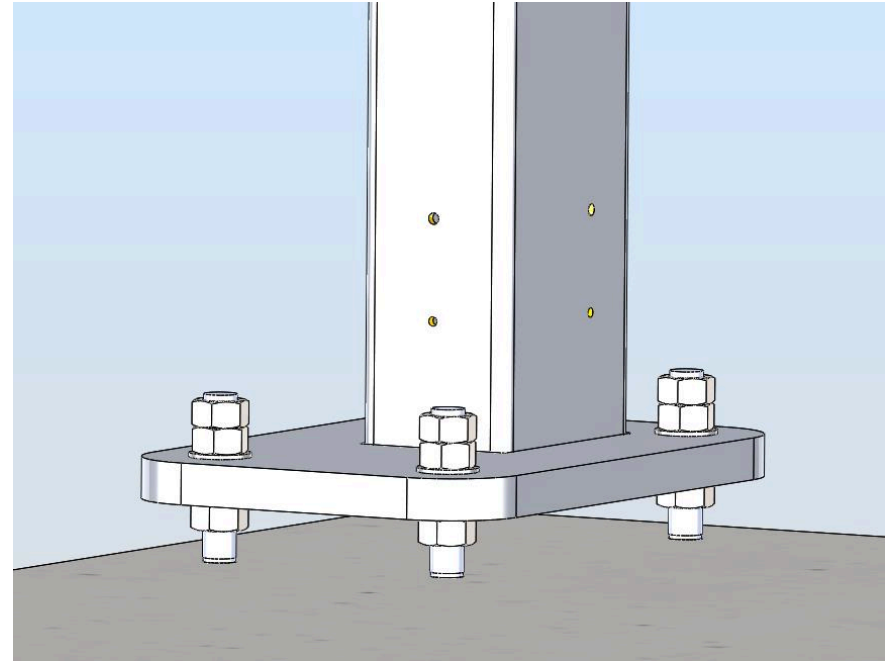
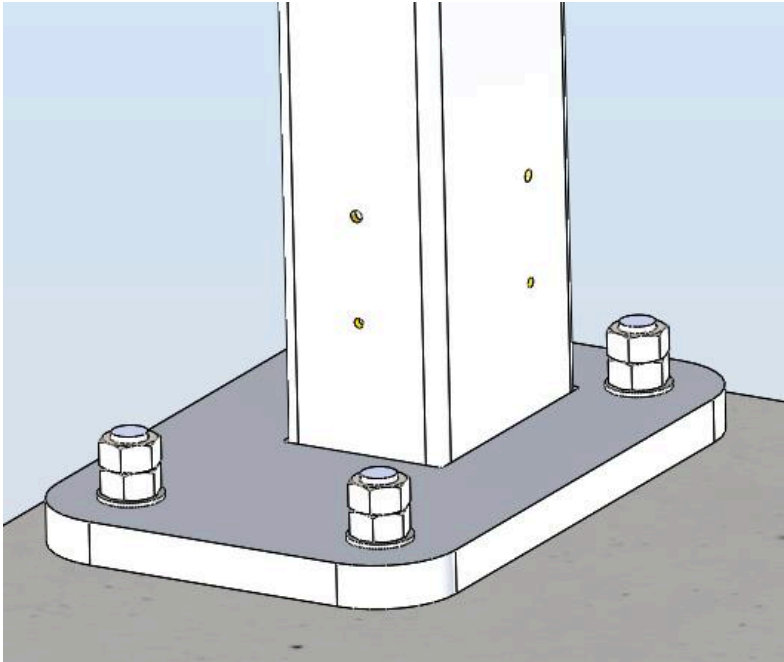
Steg 3,4,5

3. Monter M20 muttere på riktig nivå;
4. Monter mian-søylene til ly;
5. Nivå alle kolonner;

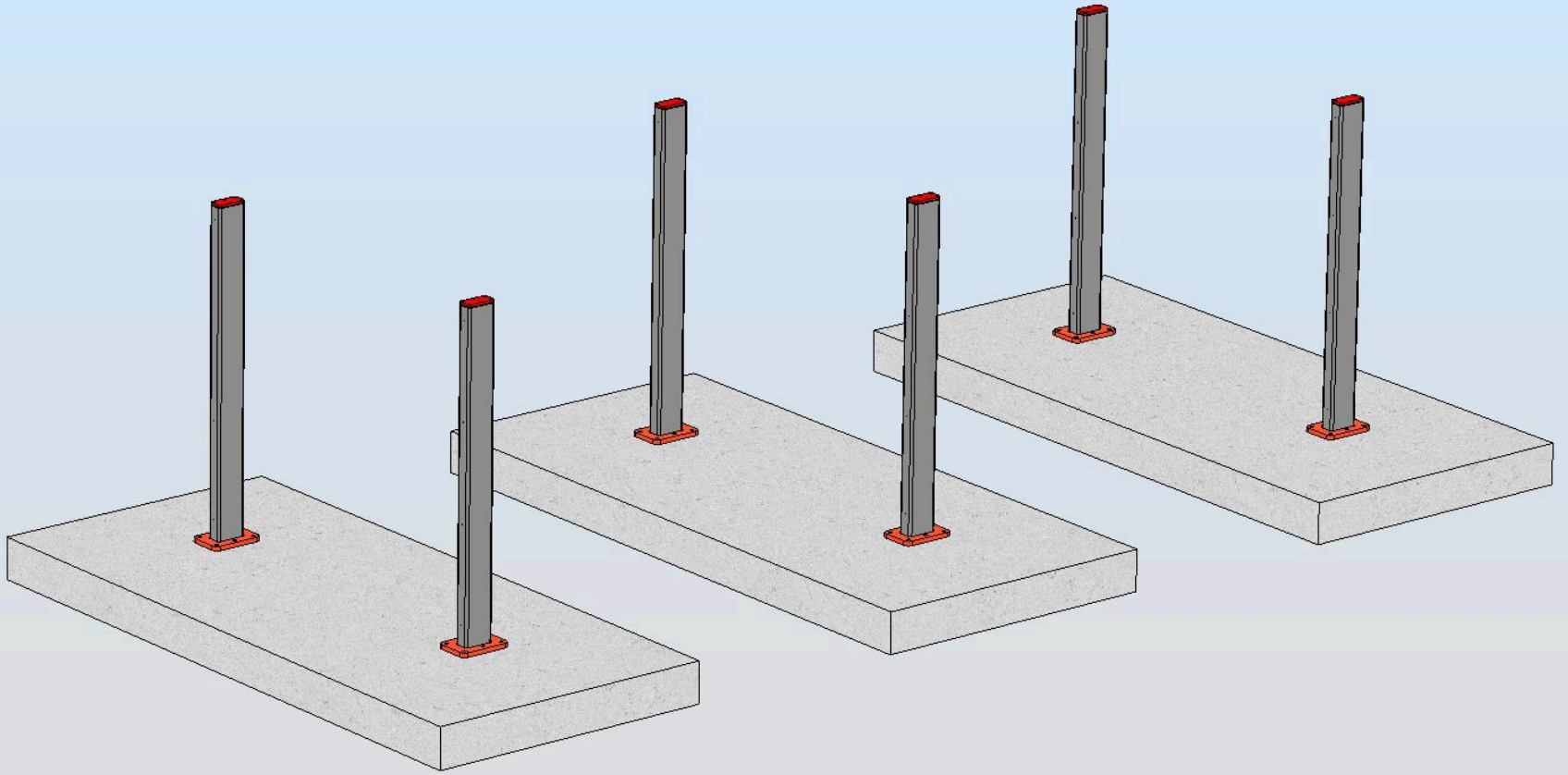


Jevne konstruksjonen
(horisontal + vertikal)

Utjevningmuligheter

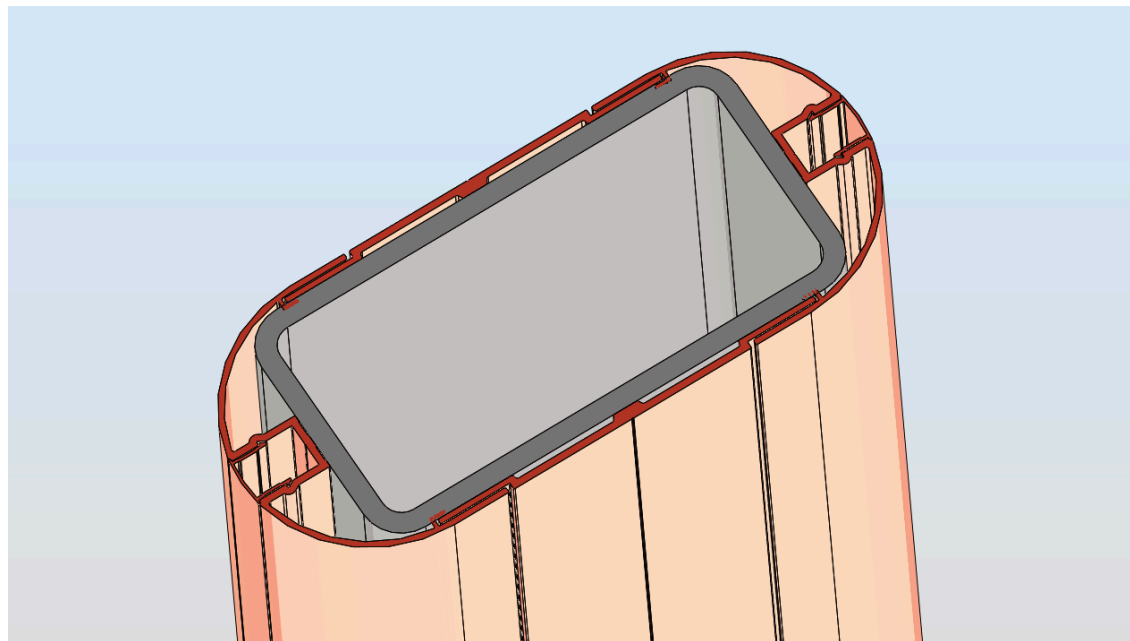
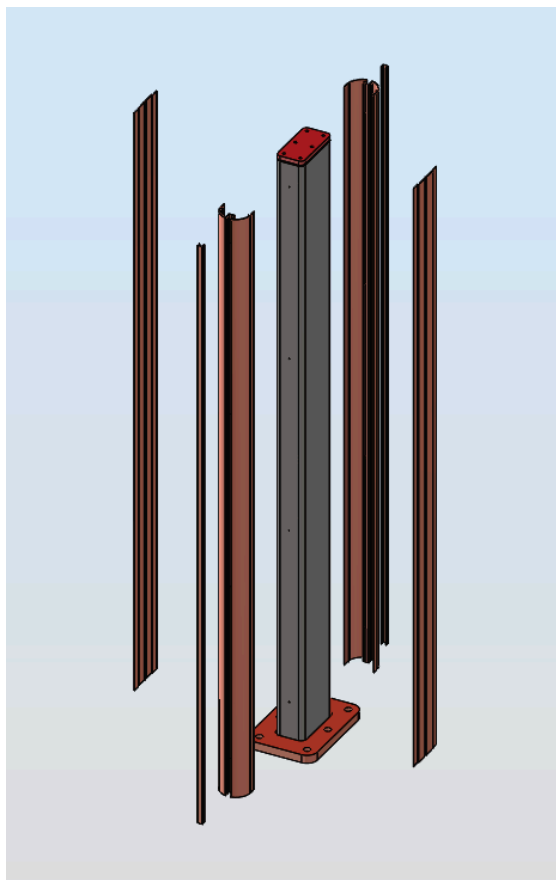


- 1) Hvis fundamentet er plant, kan du montere søylefoten direkte på det.
- 2) Hvis fundamentet har skråninger, juster søylen med M20 muttere.



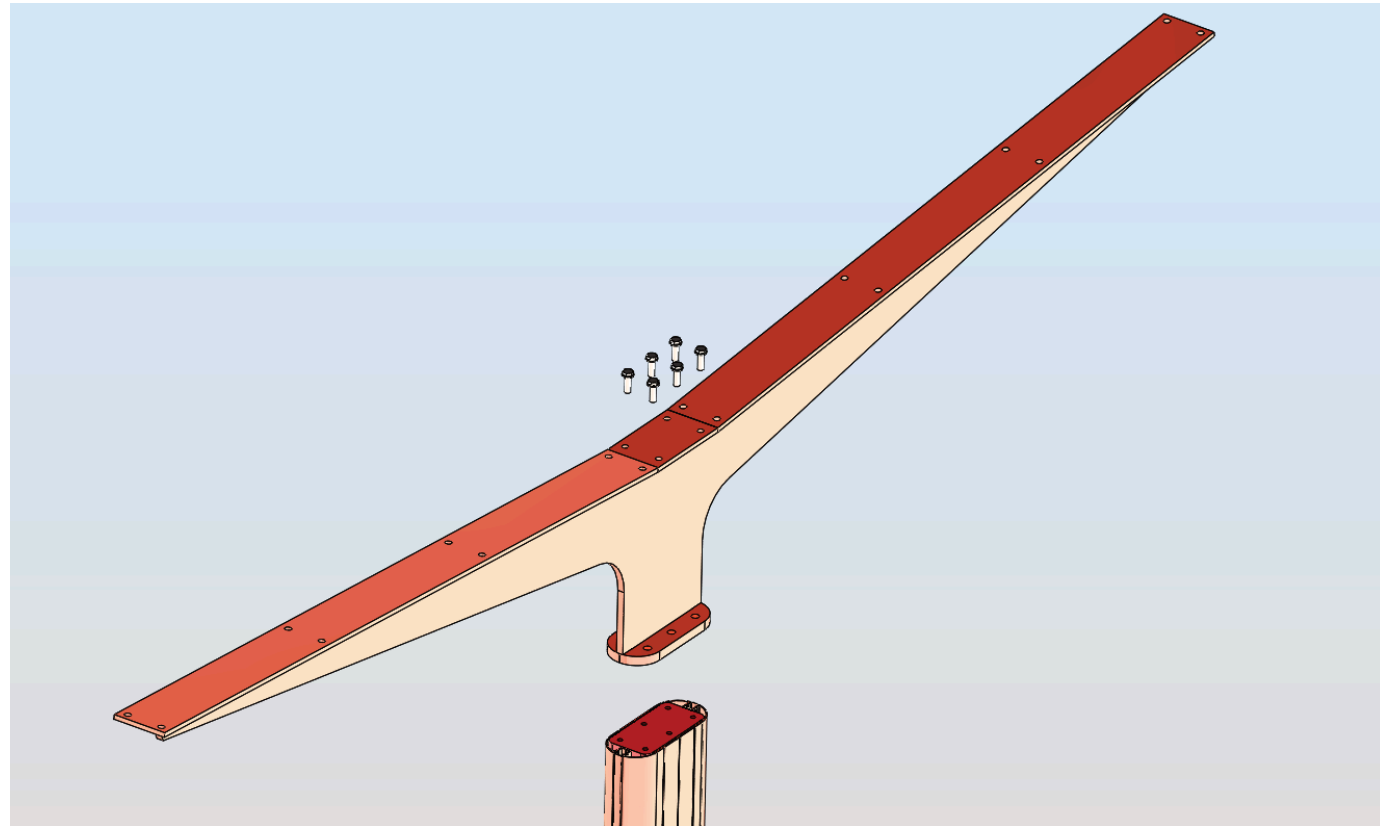
Steg 6

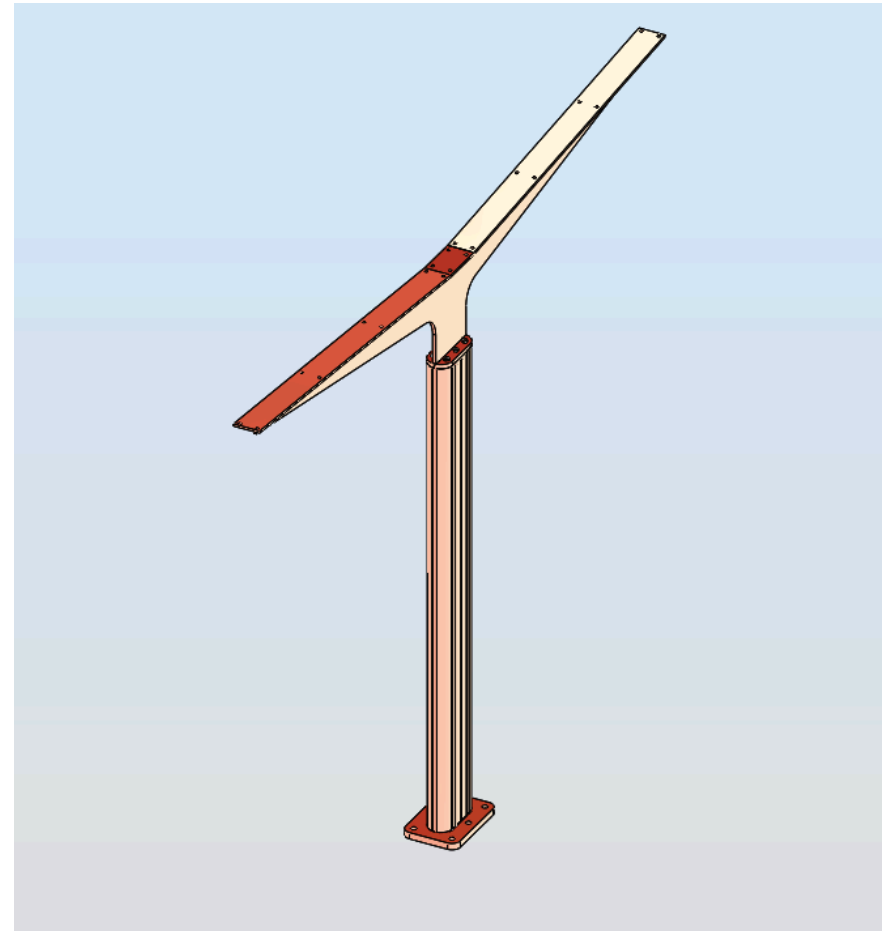
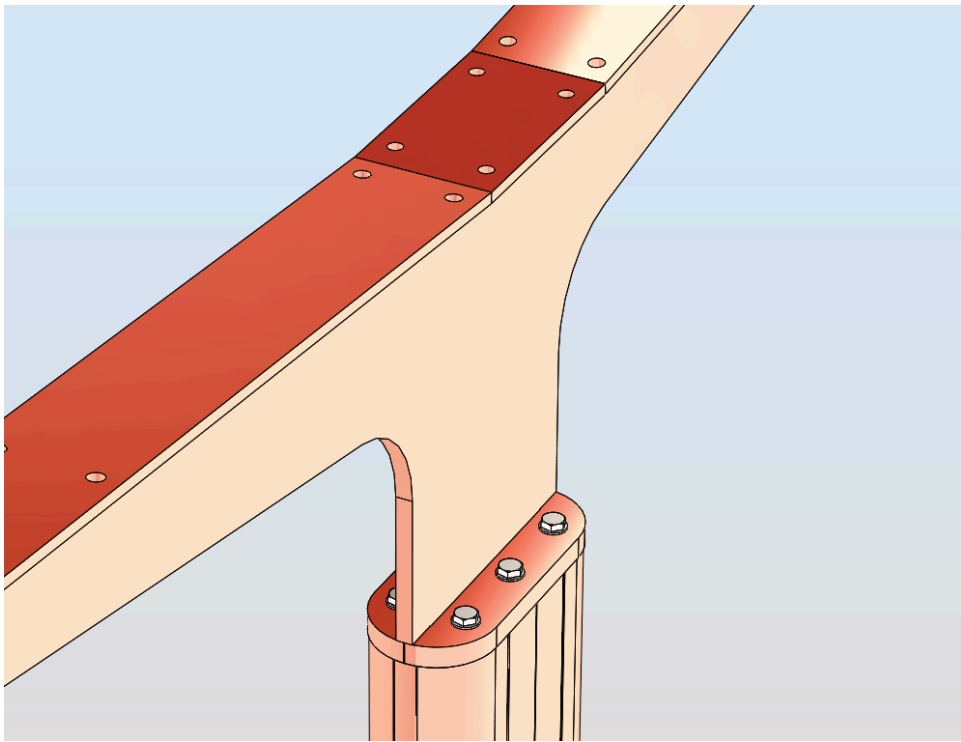
6. Monter dekselprofiler av ekstrudert aluminium på hovedsøylene, monter sidedekselprofil. Bruk en silikon og M6x20 mm knapphodeskruer for montering.

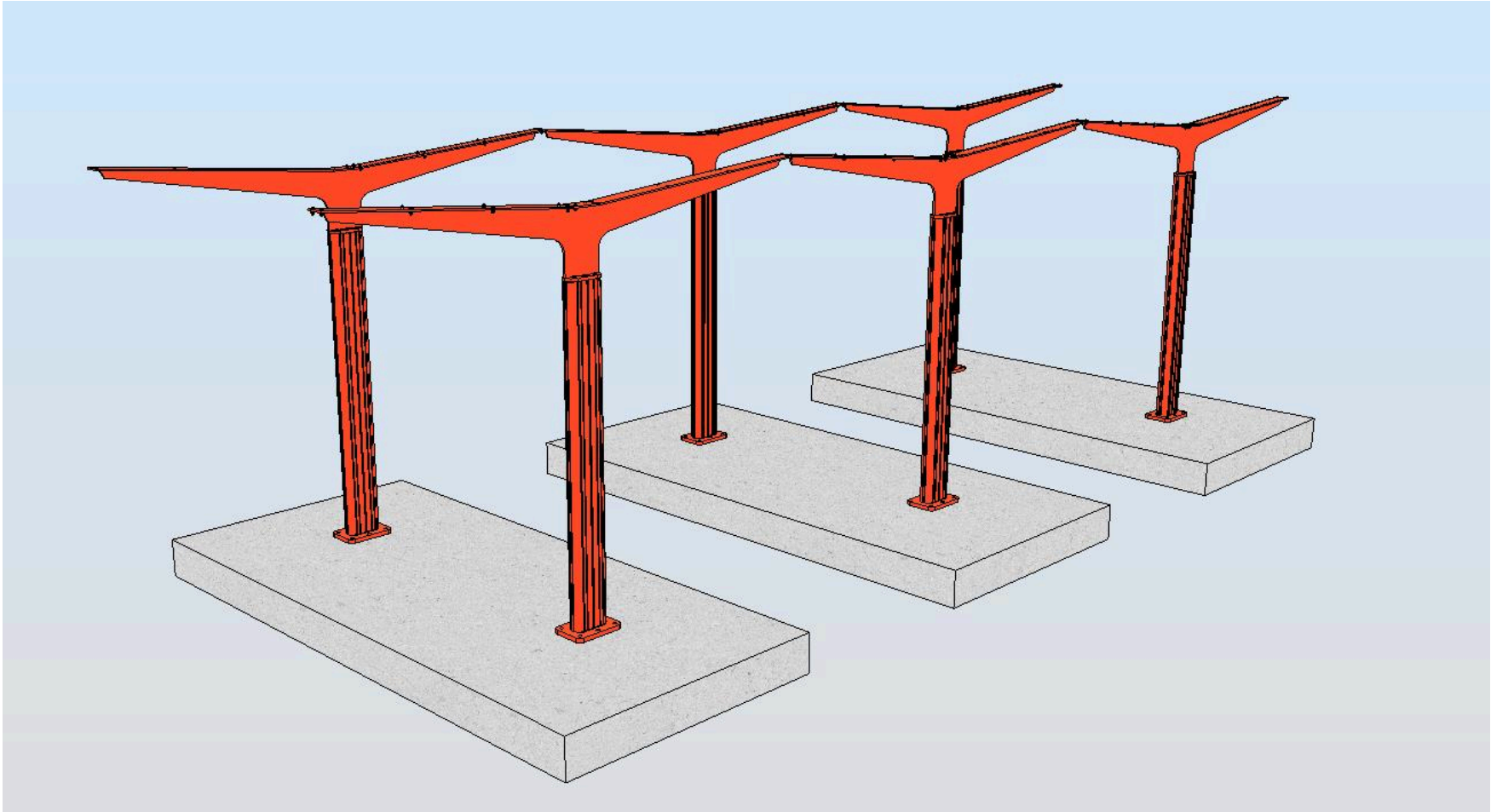


Steg 7

7. Monter takbjelker
i riktige posisjoner
(på toppen av main
kolonne).
Bruk M12x40 (klasse 10,9)

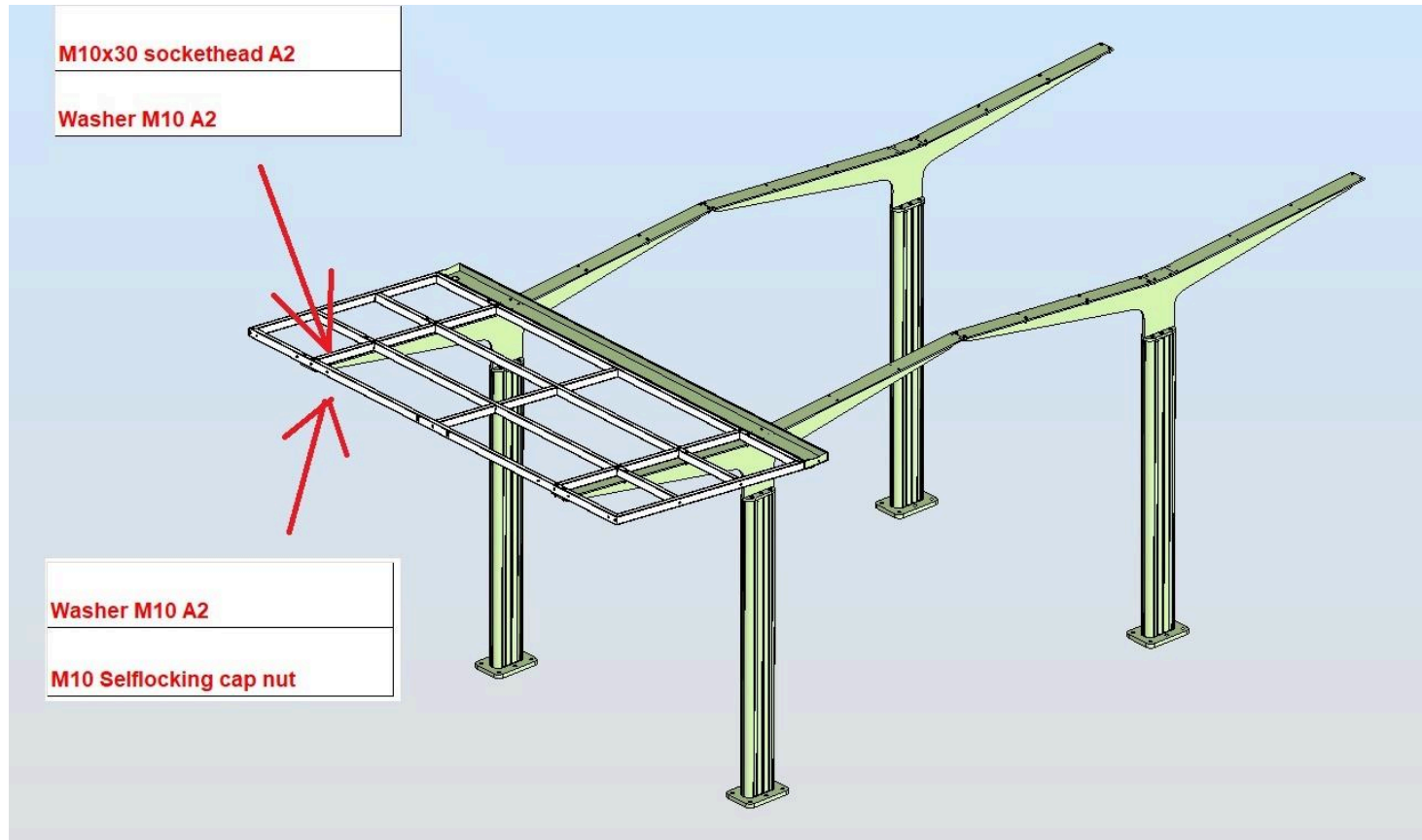


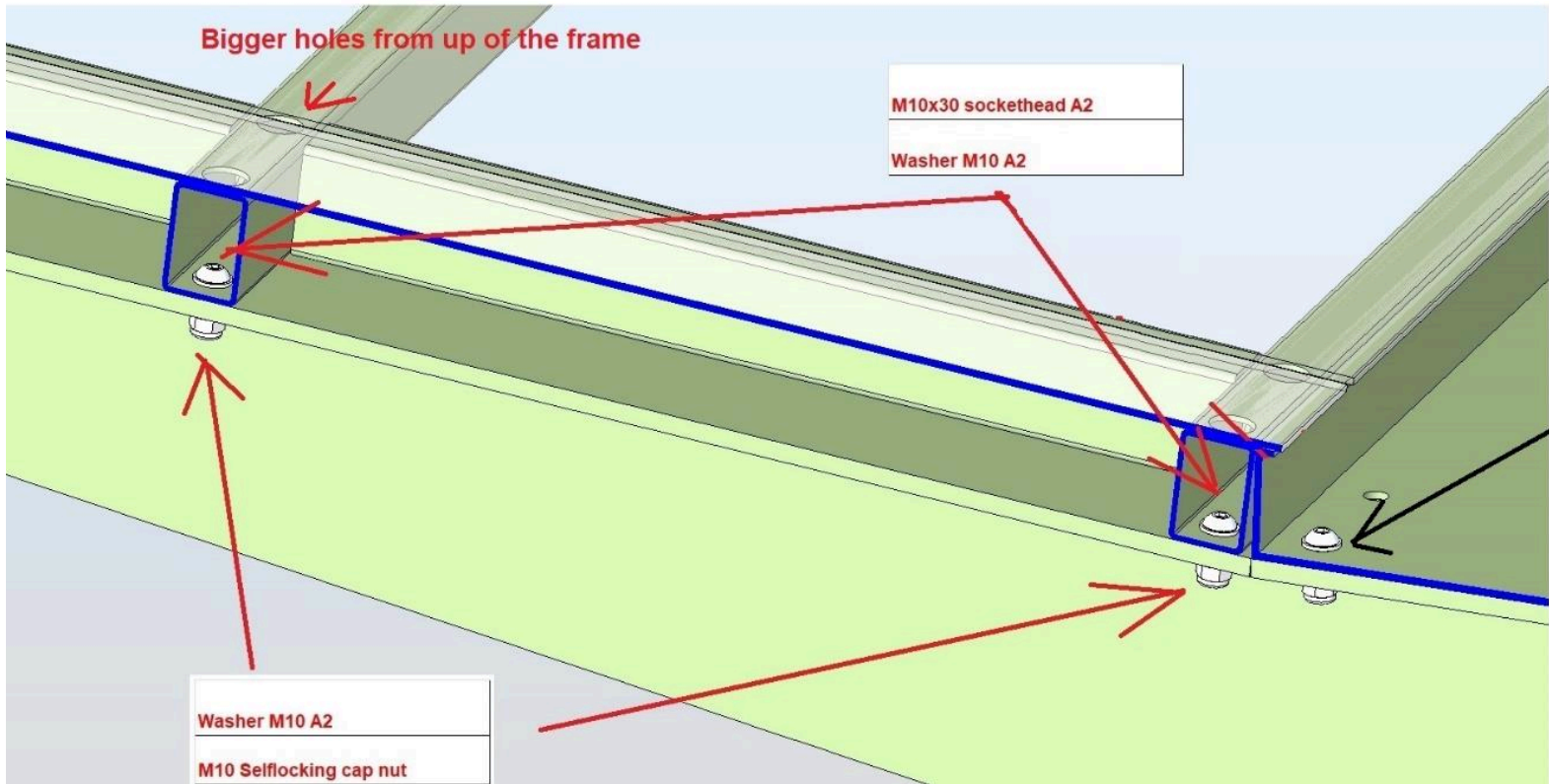




Steg 8

8. Monter takrenner og takrammer.





Bigger holes from up of the frame

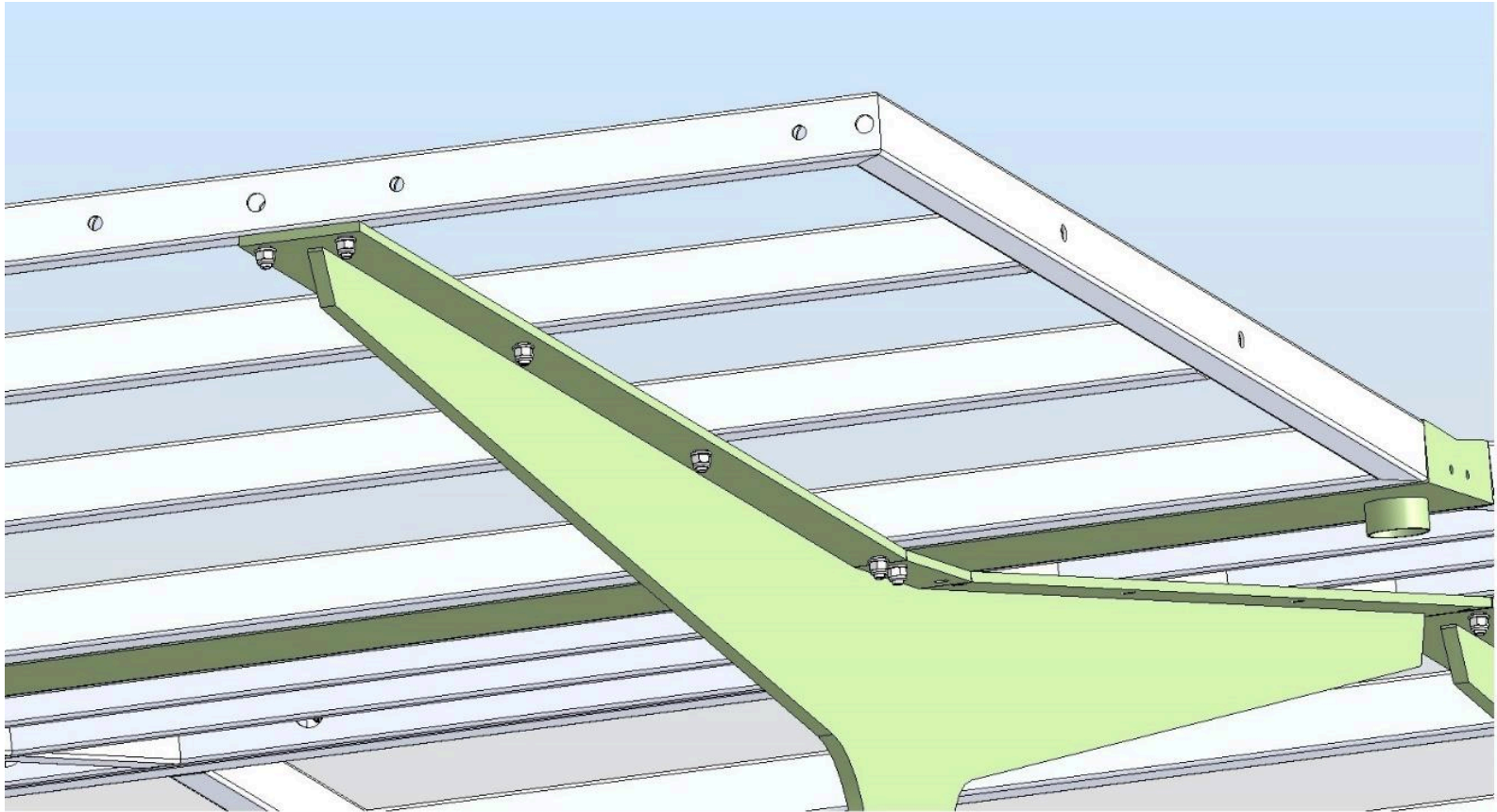
M10x30 sockethead A2
Washer M10 A2

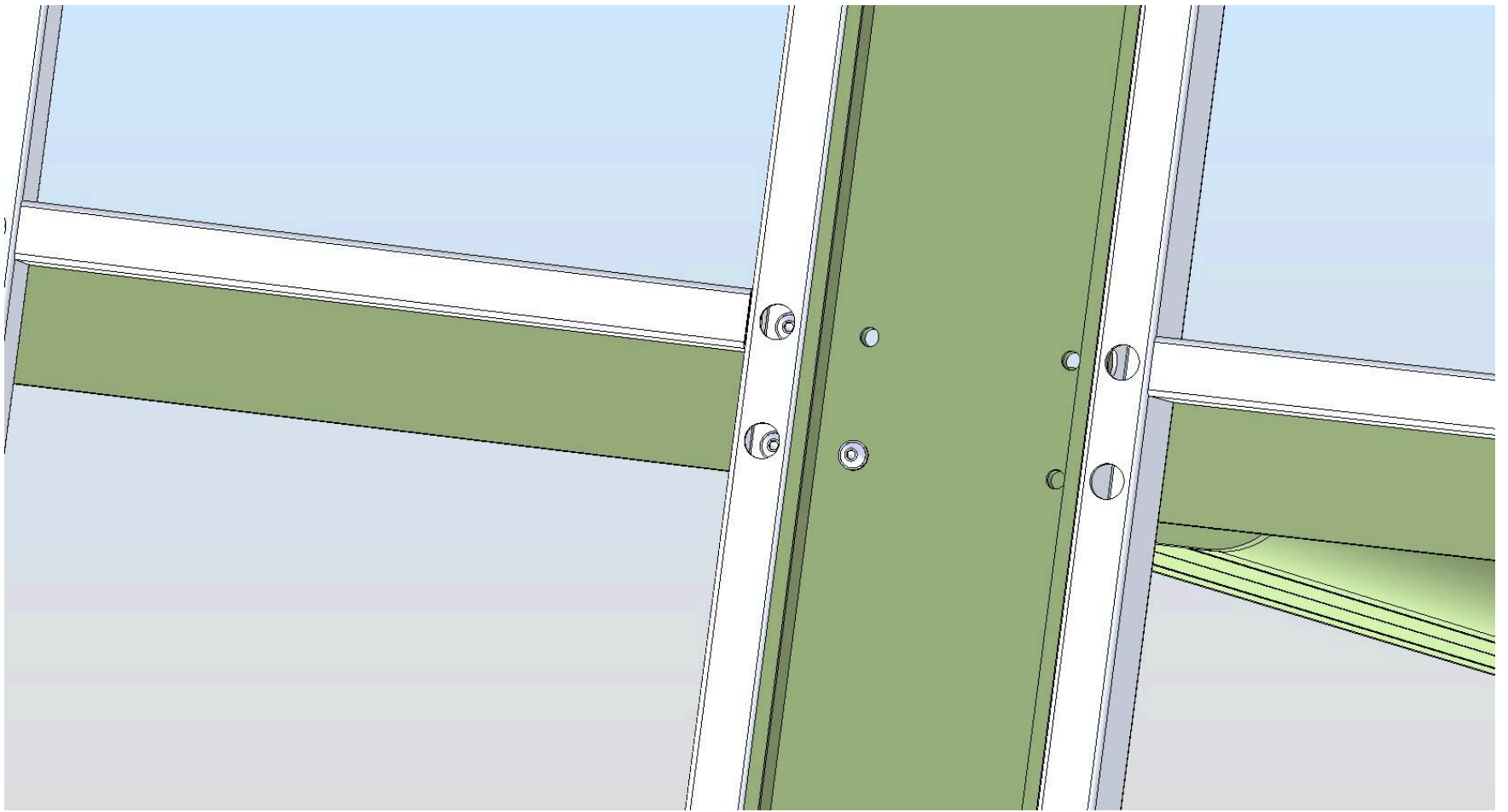
Washer M10 A2
M10 Selflocking cap nut

In gutters:

!!!!
Washer with rubber
(EPDM)

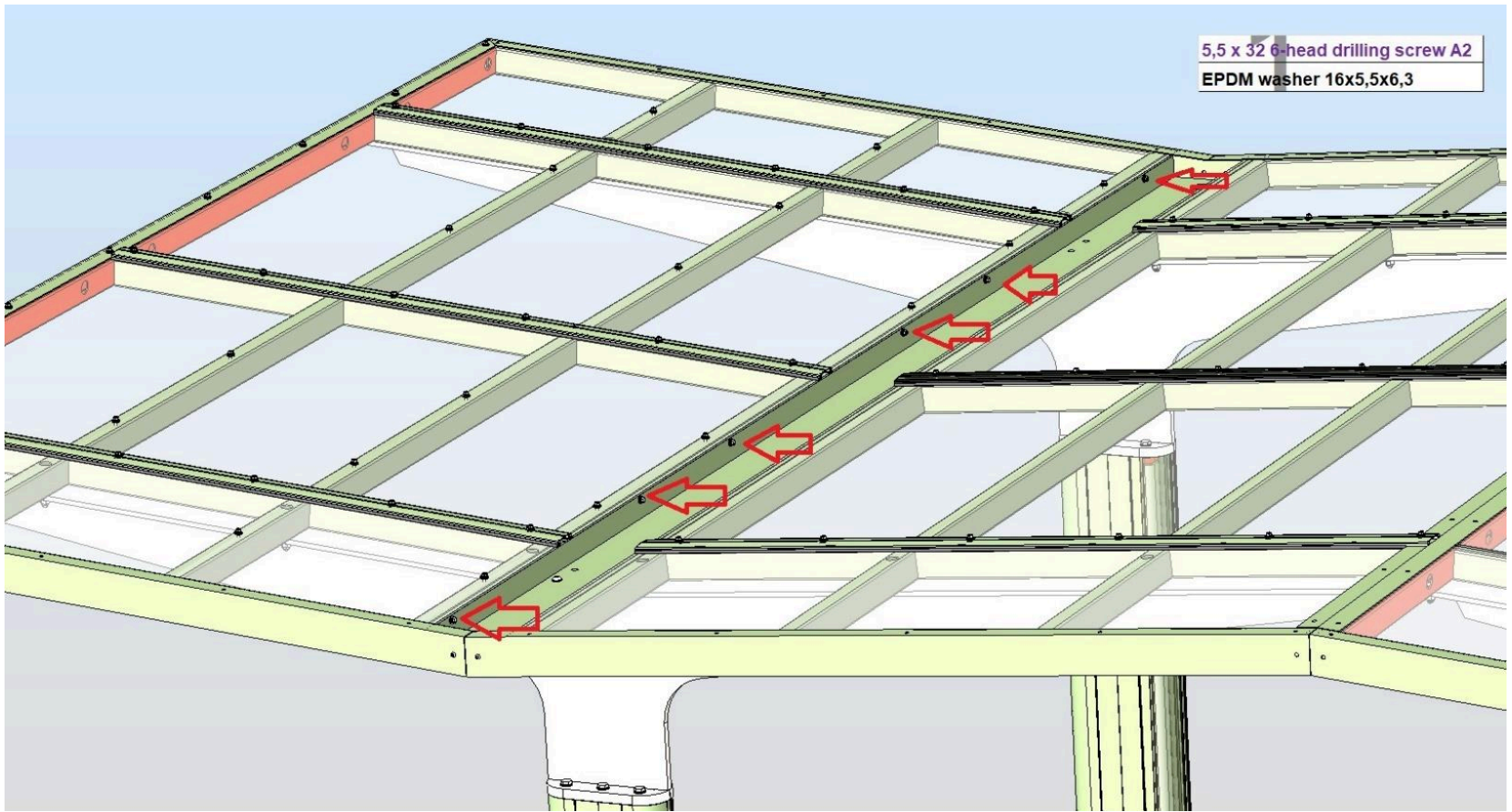
M10x30 sockethead A2
Washer M10 A2
Rubber washer M10

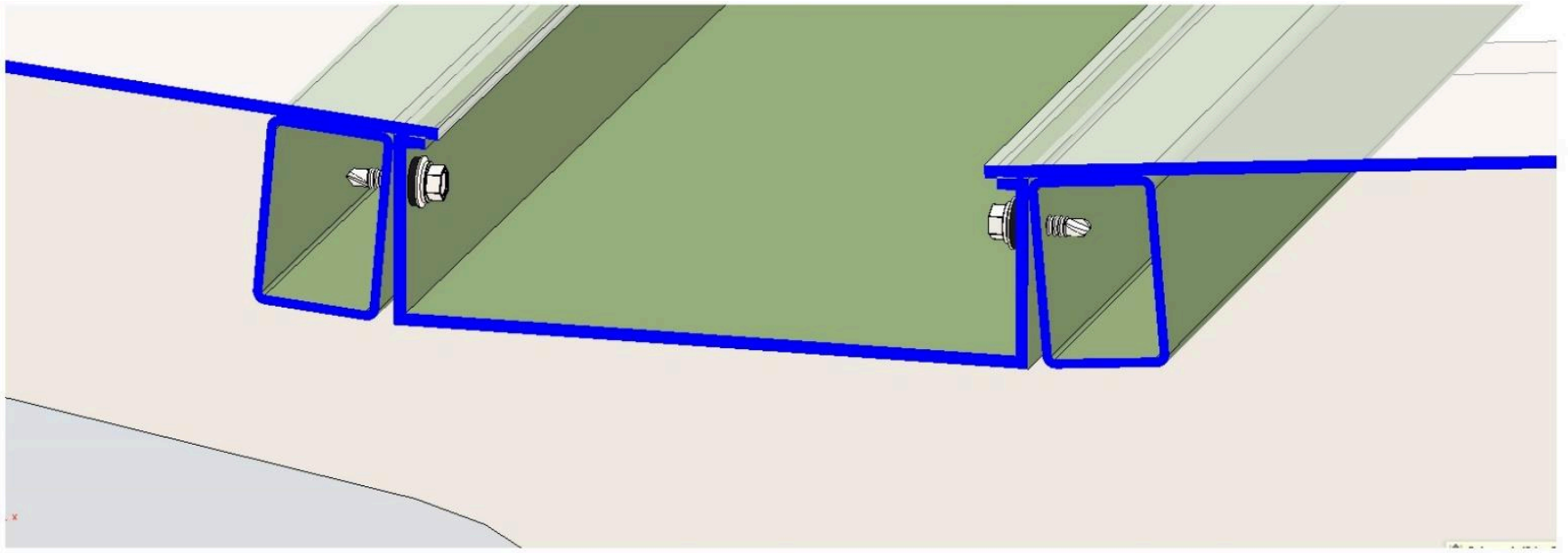




5,5 x 32 6-head drilling screw A2

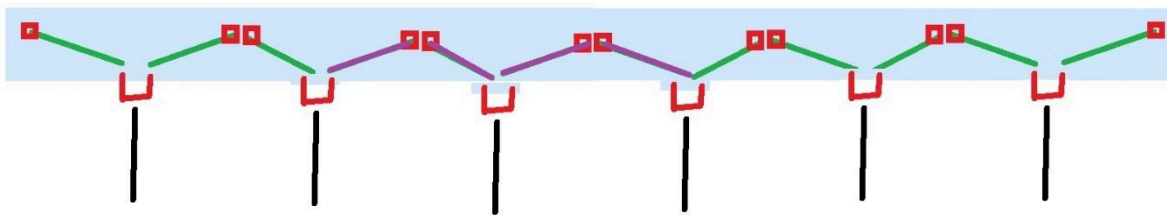
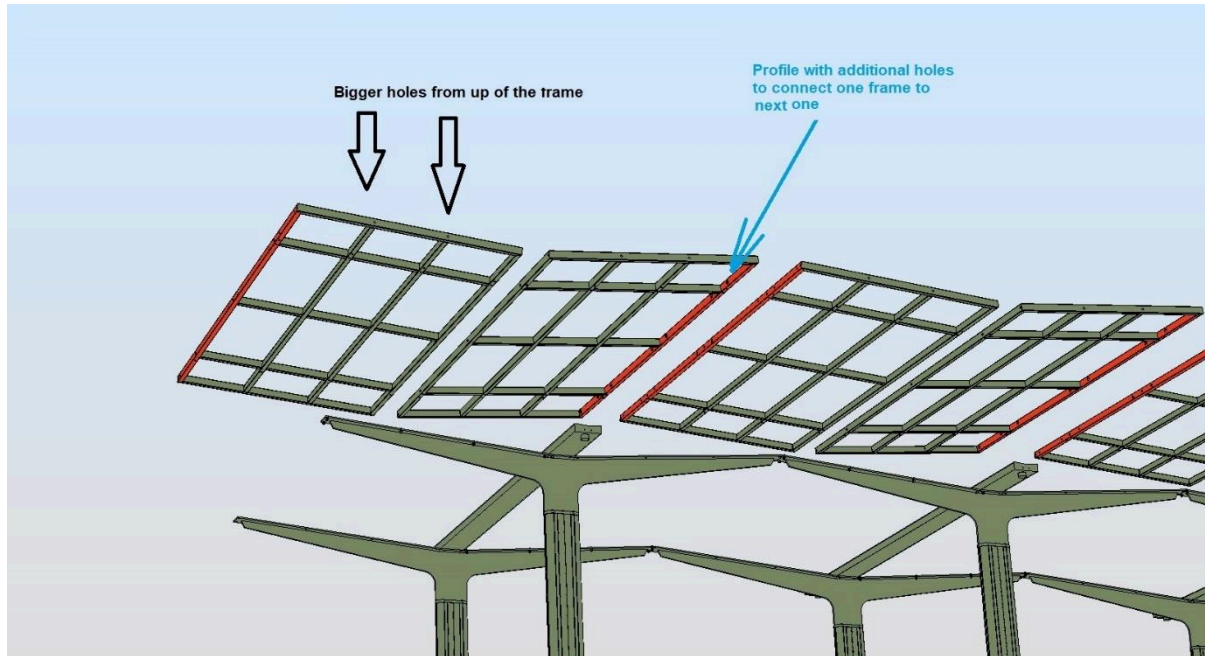
EPDM washer 16x5,5x6,3





Steg 9

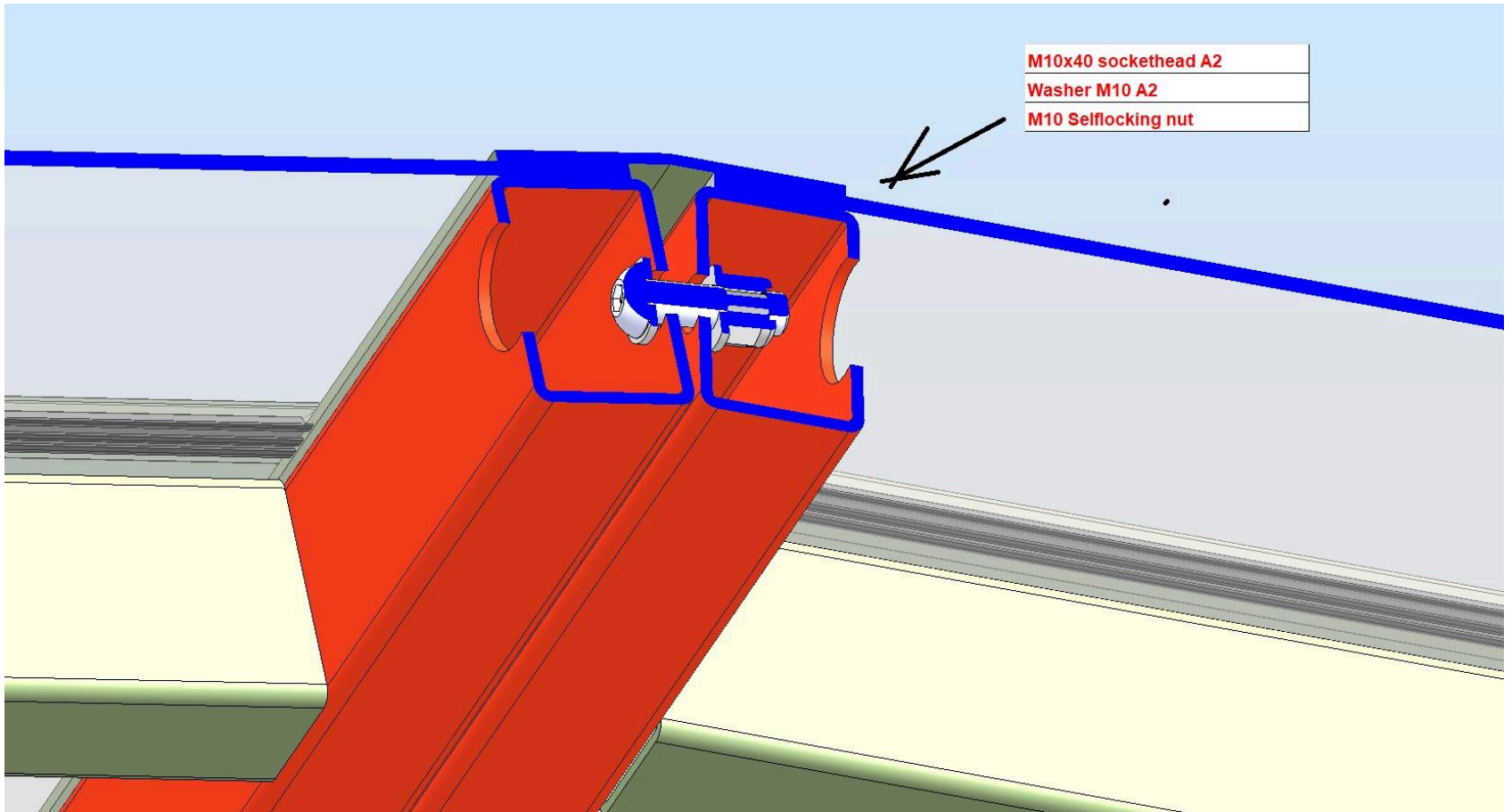
9. Koble takrammene sammen



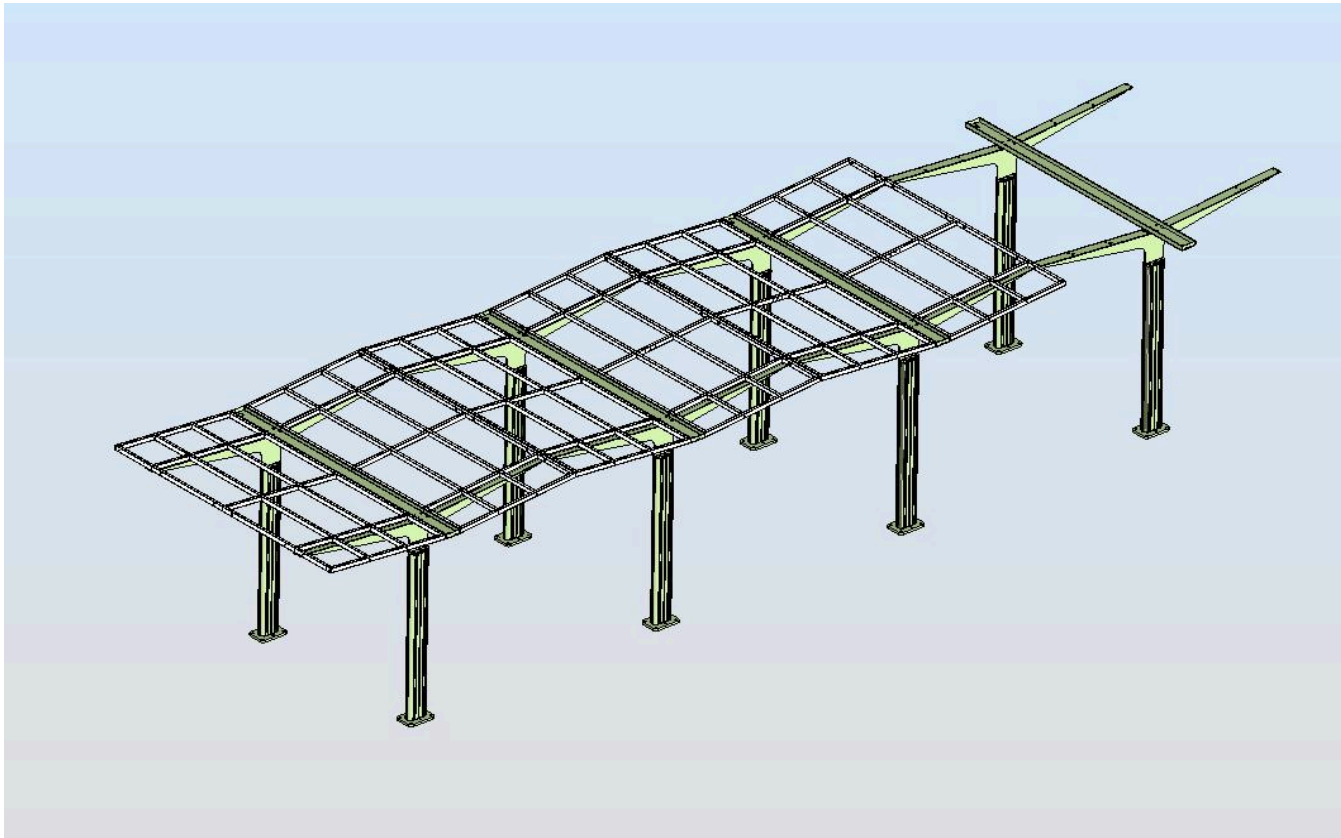
M10x40 sockethead A2

Washer M10 A2

M10 Selflocking nut



Den beste måten er å sette sammen de neste delene fra den ene siden. Du vil være i stand til å kontrollere mellomrom mellom neste rammer og kolonner.



Steg 10

10. Lim gummier til konstruksjonen;

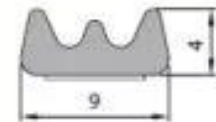


Gummibåndene skal limes til toppen av brakettene og tverrstengene. Polykarbonat skal ikke plasseres på stål, den må ha en avstandstykket laget av gummi.

Bruk gummi SD-40c

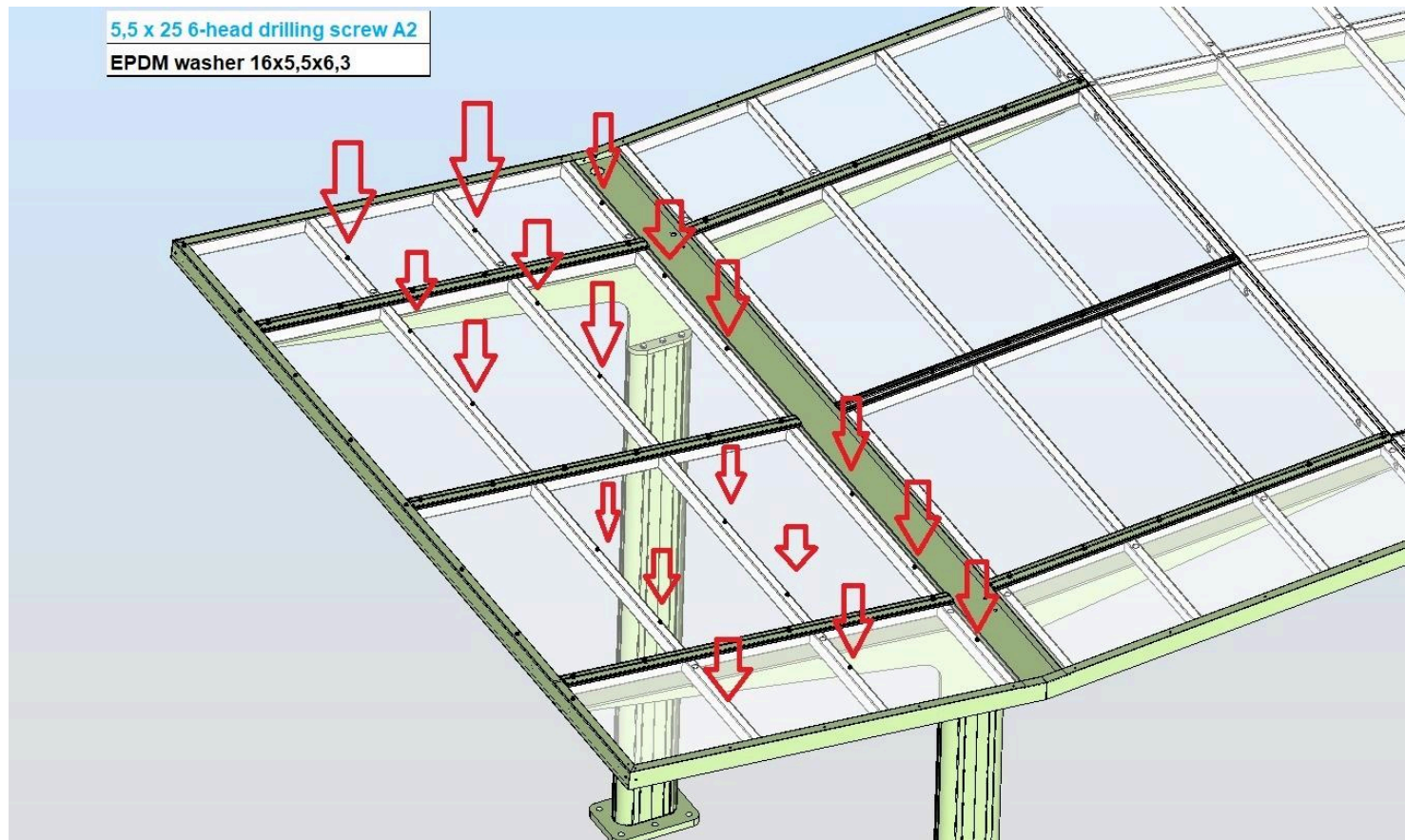


SD-40CX/4
[biała]

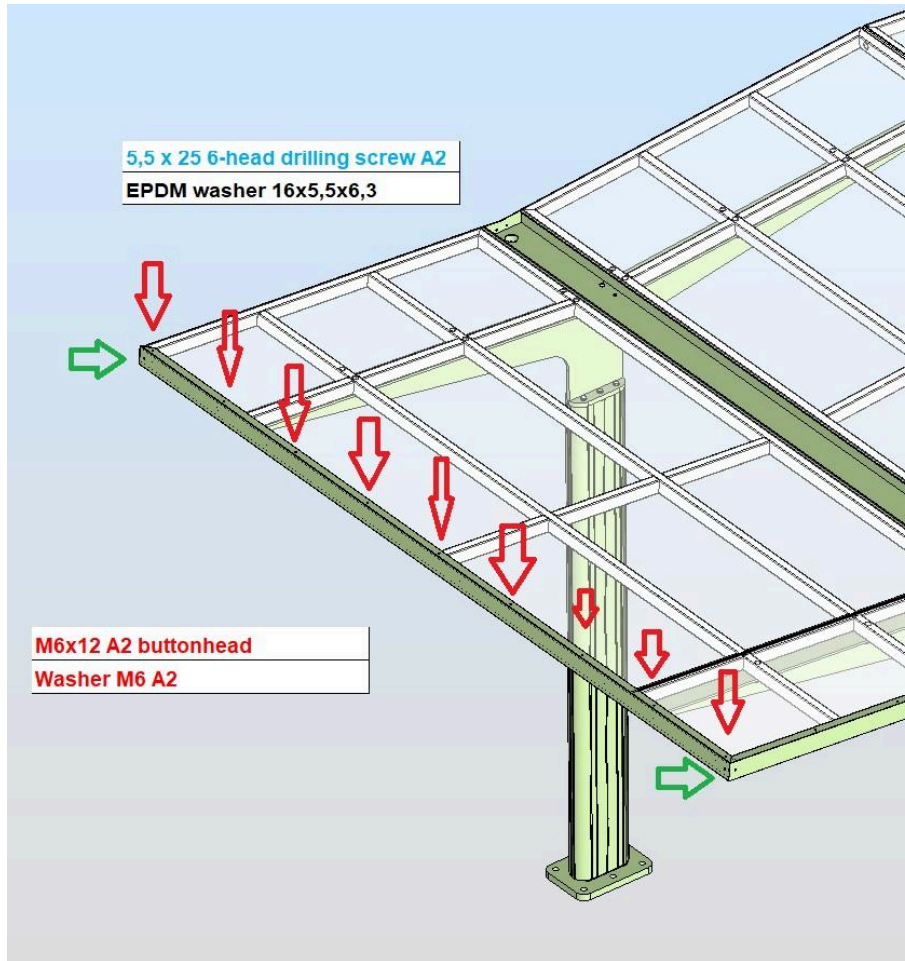


Steg 11

11. Fiks polykarbonater til rammer, men bare i steder hvor det er nå noen profiler på polykarbonater.



Steg 12

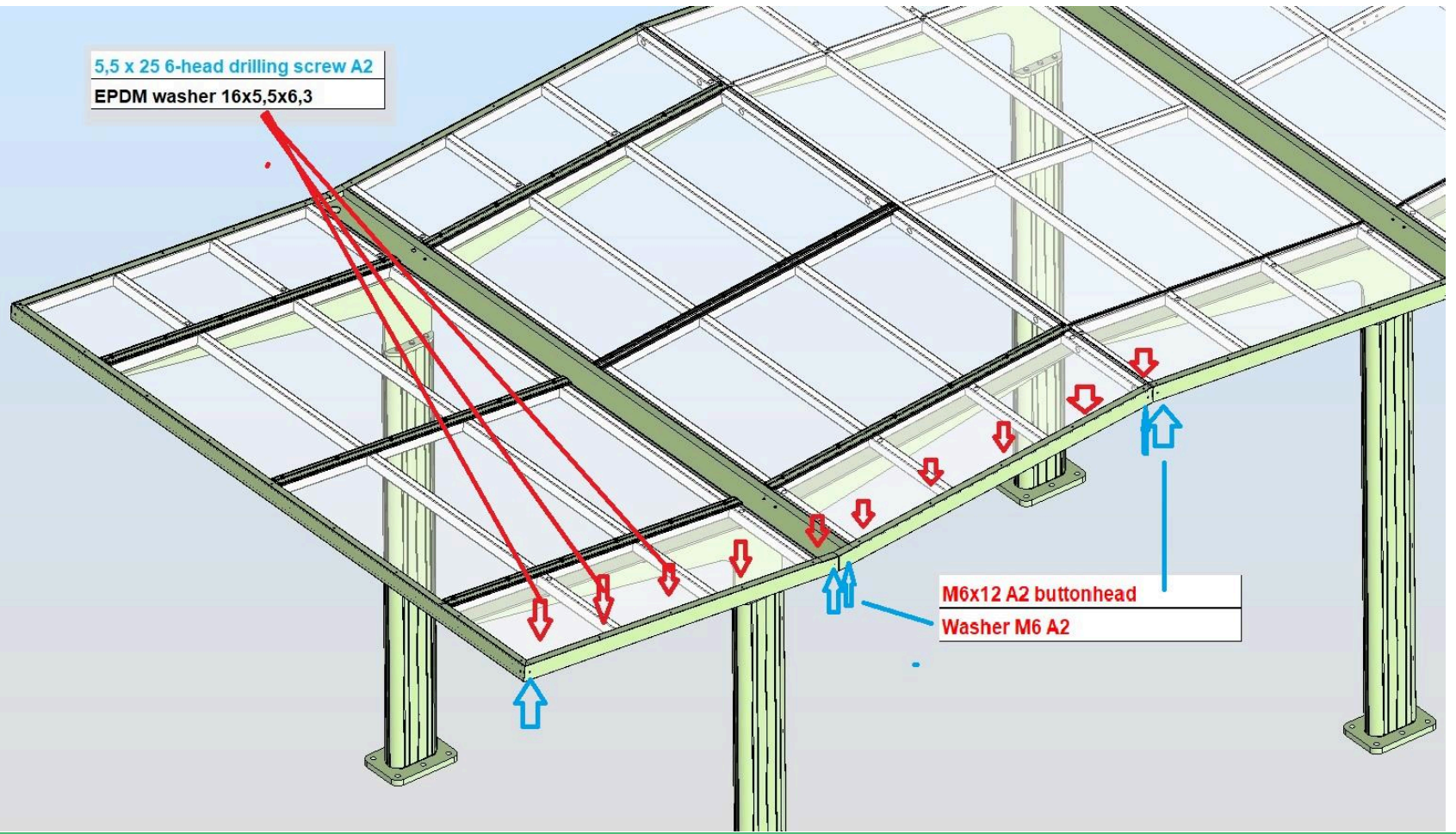


12. Monter maskeringslister – L profiler. Det skal være laget to hull på profilstedet.

Skulle ikke dette være nok, kan det lages 2 eller 3 ekstra hull hvis det er nødvendig.

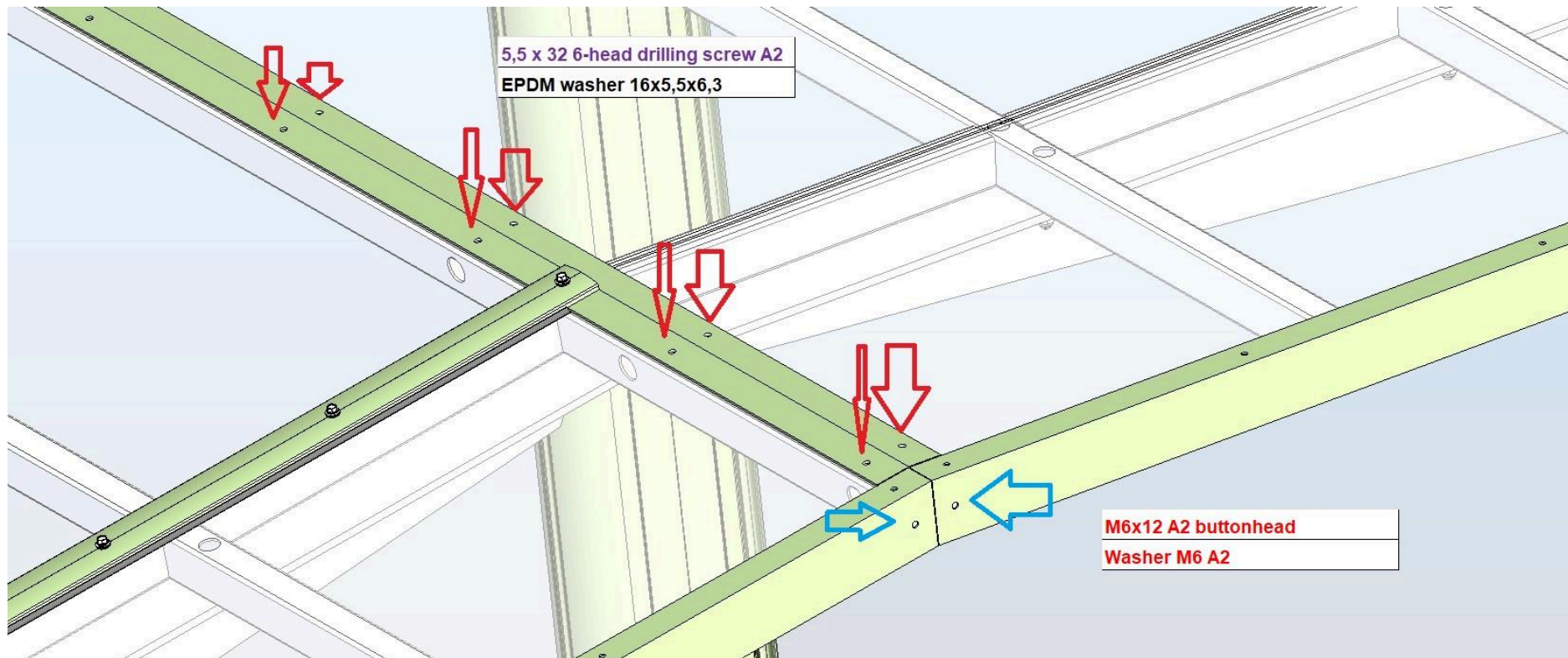
Bruke boremaskin for å klargjøre hull på riktig sted.

5,5 x 25 6-head drilling screw A2
EPDM washer 16x5,5x6,3



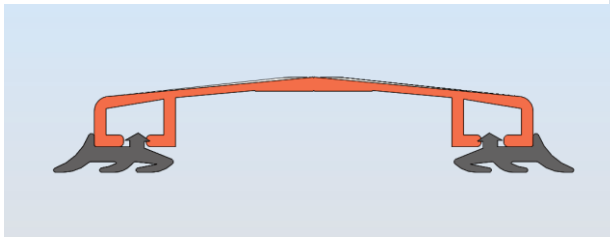
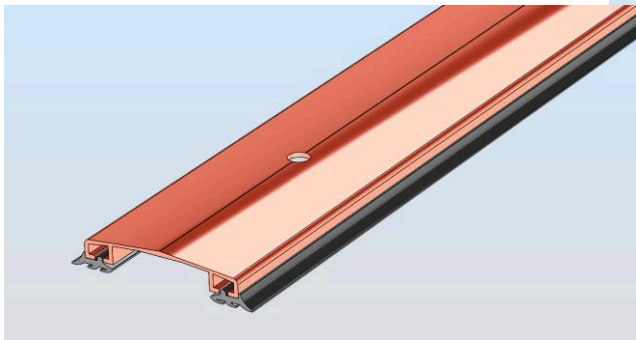
Steg 13

13. Monter mønet på toppen av tak. Flytt mønet til L-profilen på siden.



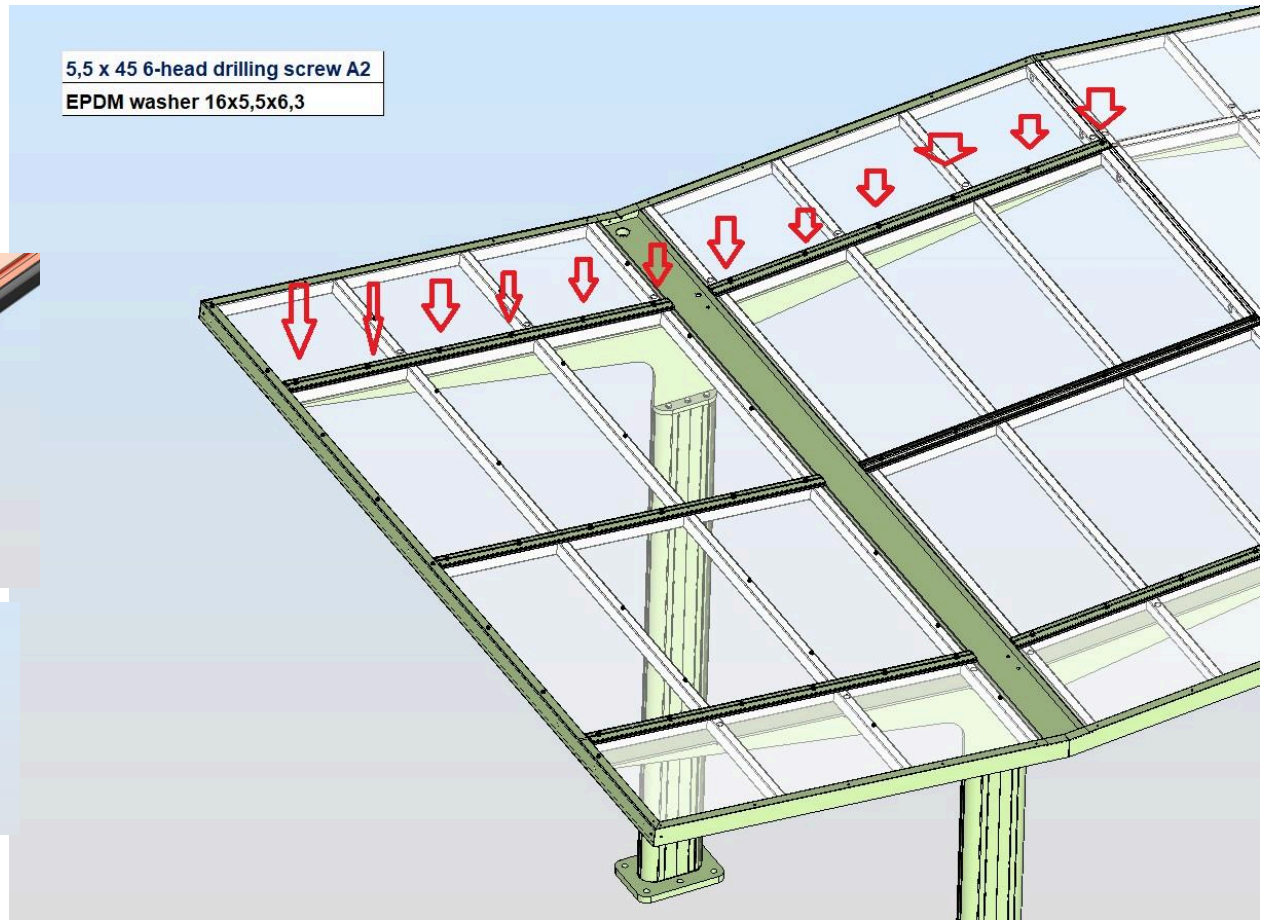
Steg 14

14. Monter takdekke
Profilen for å låse
polykarbonaten.



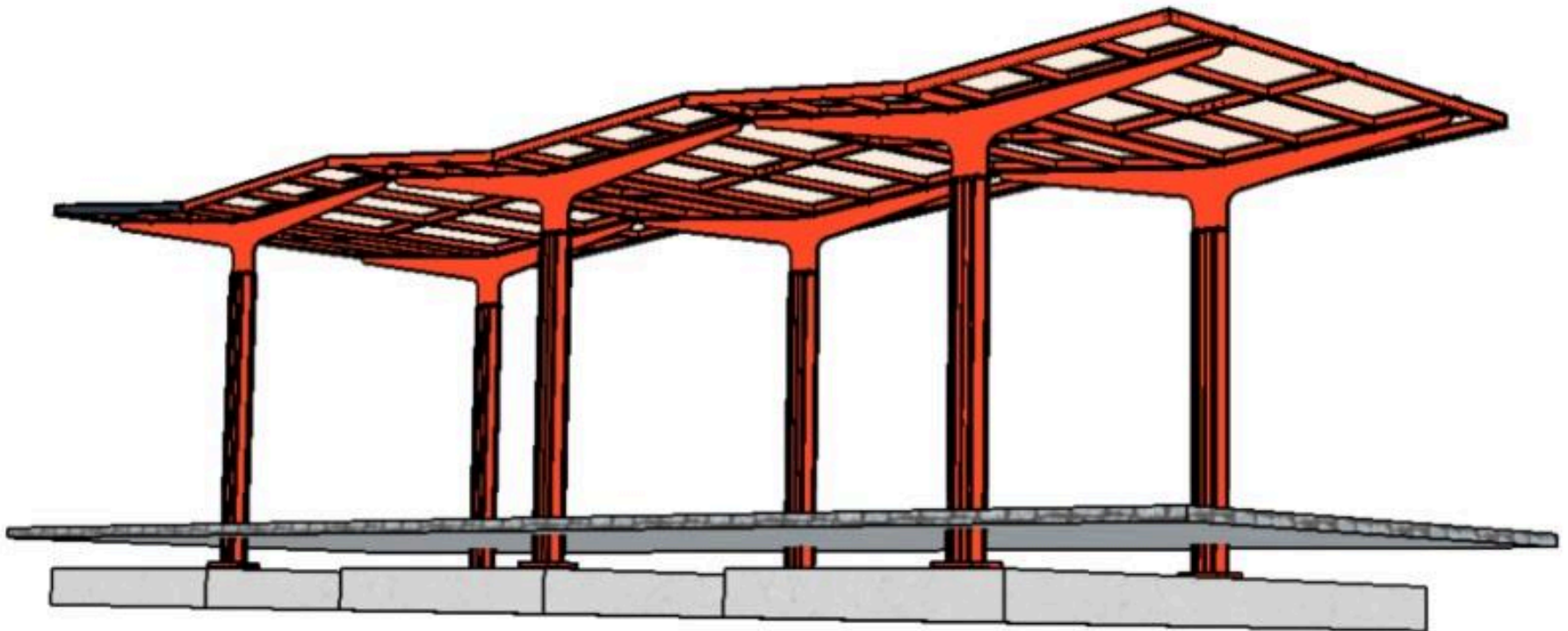
5,5 x 45 6-head drilling screw A2

EPDM washer 16x5,5x6,3



Steg 15

15. Stram til alle skruene.



Steg 16

16. Tett forbindelsen mellom takelementene. Dette er for å forhindre lekkasje fra regnvann.

